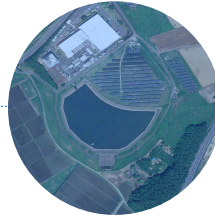
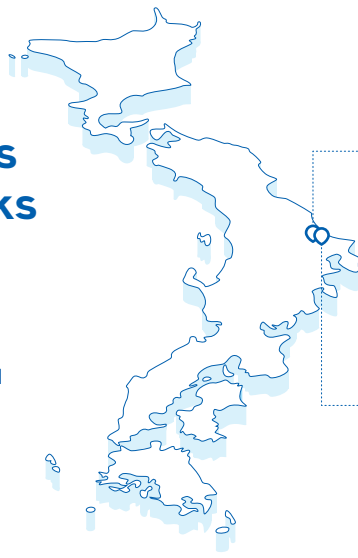


# EKO Instruments Mega Solar parks

Since 2013, both PV parks not only contributed to be a great experimental platform for new developments, but also have a tremendous impact to the general ecological strategy of EKO.



Ami Solar Park

# 721

MWh/year



Inashiki Solar Park

# 2.050

MWh/year

EKO Shokai founded

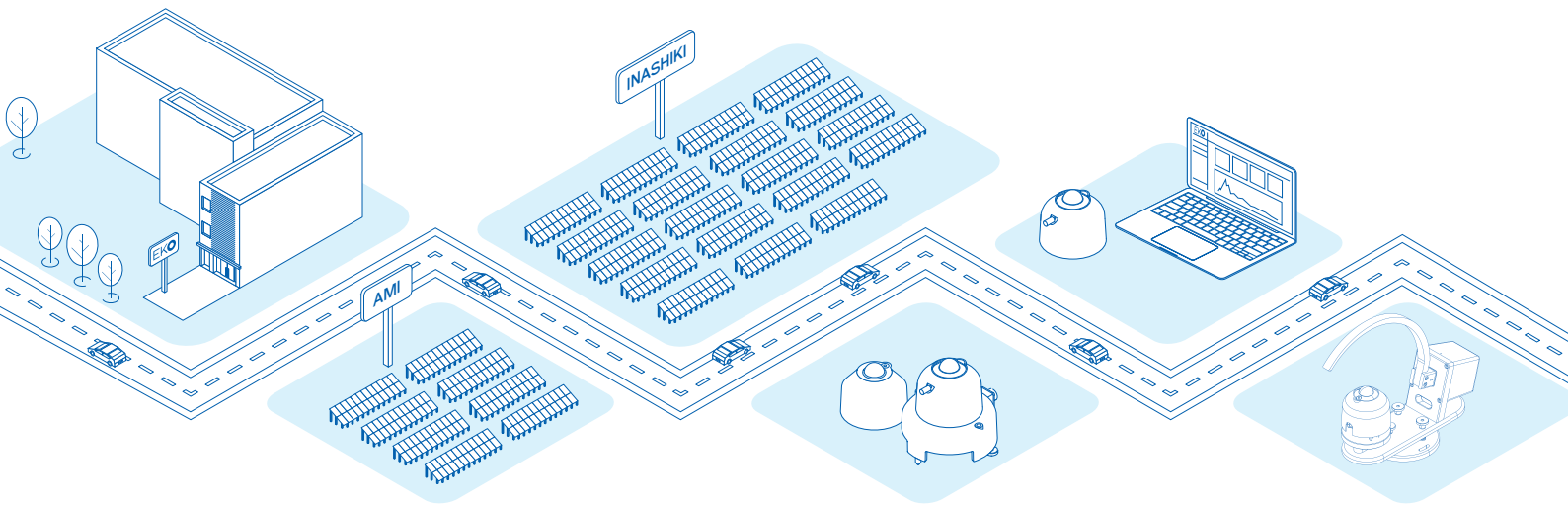
**1927**

Inashiki Solar park opens

**2015**

New SMART Sensors

**2019**



**2013**

Ami Solar park opens

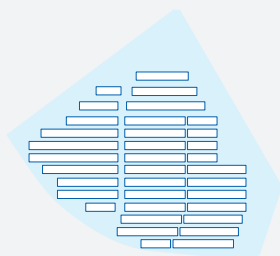
**2016**

MS-80 Fast Response  
pyranometer

**2024**

MS-80SH Plus+

## Ami Park



Land Area: **16.290 m<sup>2</sup>**

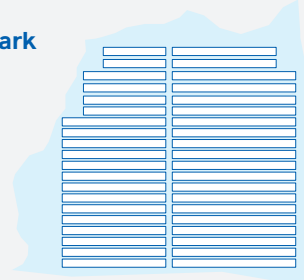
PV cell capacity: **705 kW**

Inverter capacity: **610 kW**

N. of panels: **3.188**

Tested sensors:

## Inashiki Park



Land Area: **28.500 m<sup>2</sup>**

PV cell capacity: **2020 kW**

Inverter capacity: **1.250 kW**

N. of panels: **7.560**

Tested sensors: